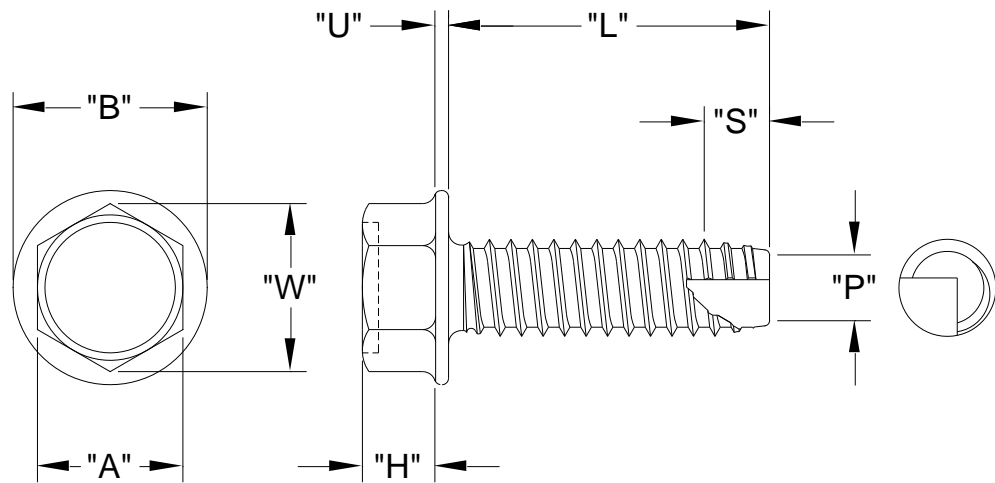


# UNSLOTTED INDENTED HEX WASHER HEAD TYPE "25" TCS

XXXXUHW25Z
APRIL, 2014
REV 00
PAGE 1 of 1

Nominal Screw Length	Tolerance On Screw Length
Up To & Including 3/4"	-0.03
Over 3/4" to 1-1/2" Inclusive	-0.05
Over 1-1/2"	-0.06



Nominal Screw Size	"D"		"d"		"p"	"s"		"A"		"W"	"H"		"B"		"U"	
	Major Diameter		Minor Diameter		Point Diameter	Point Taper Length		Width Across Flats		Width Across Corners	Head Height		Washer Diameter		Washer Thickness	
	Max.	Min.	Max.	Min.	Ref.	Max.	Min.	Max.	Min.	Min.	Max.	Min.	Max.	Min.	Max.	Min.
#4-24	0.114	0.108	0.086	0.082	0.079	0.083	0.063	0.188	0.181	0.202	0.060	0.049	0.243	0.225	0.019	0.011
#6-20	0.139	0.132	0.104	0.099	0.095	0.100	0.075	0.250	0.244	0.272	0.093	0.080	0.328	0.302	0.025	0.015
#8-18	0.166	0.159	0.122	0.116	0.112	0.111	0.083	0.250	0.244	0.272	0.110	0.096	0.348	0.322	0.031	0.019
#10-16	0.189	0.182	0.141	0.135	0.130	0.125	0.094	0.312	0.305	0.340	0.120	0.105	0.414	0.384	0.031	0.019
#12-14	0.215	0.208	0.164	0.157	0.152	0.143	0.107	0.312	0.305	0.340	0.155	0.139	0.432	0.398	0.039	0.022
1/4-14	0.246	0.237	0.192	0.185	0.179	0.143	0.107	0.375	0.367	0.409	0.190	0.172	0.520	0.480	0.050	0.030
5/16-12	0.315	0.306	0.244	0.236	0.230	0.167	0.125	0.500	0.489	0.545	0.230	0.208	0.676	0.624	0.055	0.035
3/8-12	0.380	0.371	0.309	0.299	0.293	0.167	0.125	0.562	0.551	0.614	0.295	0.270	0.780	0.720	0.063	0.037

Standard: ASME B18.6.3  
 Material: Carbon Steel,  
 Heat Treat: Case Hardened Rc45 Min.  
 Finish: Commercial Zinc, Bake & ROHS Compliant Clear Chromate  
 Per ASTM F1941 Code Fe/Zn 3A

Common Uses:  
 Increased Bearing Surface w/o Adding A Washer.  
 Used in painted sheet metal ≤60% of screw dia.; hard  
 plastics, hard woods & aluminum extrusions.